

## Ingredients Information Cranberry



**SPA PARADISE**

*Das intensive Wellness-Kurzprogramm*



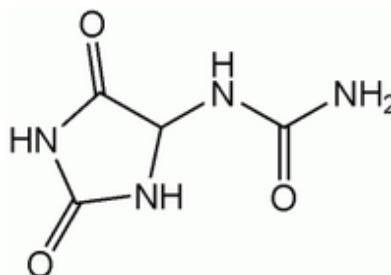
## ALLANTOIN

**Allantoin** is a protein metabolism product found in many animal and plant species and is for example extracted from the root of the comfrey (*Symphytum officinale*) and the horse chestnut (*Aesculus hippocastanum*). Chemically synthesized bulk allantoin is natural-identical, safe, non-toxic, compatible with cosmetic raw materials, and meets CTFA and JSCI requirements.

### Description:

Allantoin is a chemical compound with formula  $C_4H_6N_4O_3$ . It is also called 5-ureidohydantoin or glyoxyldiureide.

### Chemical structure:



### Cosmetic benefits:

Allantoin is a multifunctional active ingredient. It is used for: a moisturizing and keratolytic effect, increasing the water content of the extracellular matrix and enhancing the desquamation of upper layers of dead skin cells, increasing the smoothness of the skin, promotion of cell proliferation and wound healing; and a soothing, anti-irritant and skin protectant effect by forming complexes with irritant and sensitizing agents.

### Cosmetic applications:

Allantoin is frequently present in toothpaste, mouthwash and other oral hygiene products, in shampoos, lipsticks, anti-acne products, sun care products, clarifying lotions, various cosmetic lotions and creams and other cosmetic products.

## Ingredients Information Cranberry



**SPA PARADISE**

*Das intensive Wellness-Kurzprogramm*



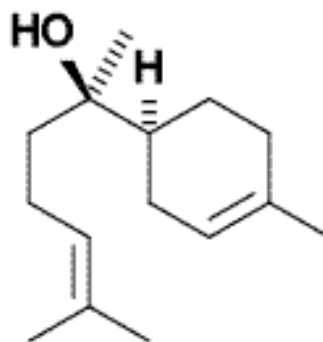
## BISABOLOL

**Bisabolol** is an ingredient found in the essential oil from German chamomile (*Matricaria recutita*) and *Myoporum grassifolium*. Bisabolol has a weak sweet floral aroma and is used in various fragrances. It has also been used for hundreds of years in cosmetics because of its perceived skin healing properties.

### Description:

Bisabolol or more formally  $\alpha$ -(-)-bisabolol is a natural monocyclic sesquiterpene alcohol. It is a colorless viscous oil that is the primary constituent of the essential oil from German chamomile (*Matricaria recutita*) and *Myoporum grassifolium*.

### Chemical structure:



### Properties of Bisabolol:

Bisabolol is known to have anti-irritant, anti-inflammatory and anti-microbial properties.

### Cosmetic applications:

Bisabolol is used in skin care, baby care, after sun products, after shave.

## VITAMIN E / TOCOPHEROL / TOCOPHERYL ACETATE

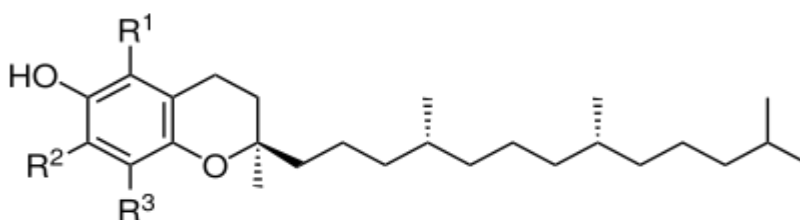
**Tocopherol** (Vitamin E) is a fat soluble vitamin, that reinforces the antioxidative defenses of cell membranes.

Tocopheryl Acetate is an ester of tocopherol and acetic acid, used to bind free radicals, and support cell renewal and cellular oxygen metabolism. In foods, the most abundant sources of vitamin E are vegetable oils such as palm oil, sunflower, corn, soybean, and olive oil. Nuts, sunflower seeds, seabuckthorn berries and wheat germ are also good sources.

### Description:

Tocopherol describes a series of organic compounds consisting of various methylated phenols. Natural vitamin E exists in eight different forms, four tocopherols and four tocotrienols.

### Chemical structure:



### Properties of Vitamin E:

Vitamin E binds free radicals and prevents their destructive action on lipids, cells and cell membranes. Vitamin E promotes the biological stability of the cells and smoothes and strengthens the skin. It has also moisturizing properties.

### Cosmetic applications:

Vitamin E is used in moisturizing creams, sun care, anti-aging products, after sun care, day creams, night creams, body care, hair care.